

Bonded Internet

How Bonded internet Can Save the Day (and your bank account)

Do you Trust Just 1 Connection?



In 2015, Multapplied tracked internet outage on Google and found 263 unique major outages. The #1 cause was accidental cut lines.¹ Almost 78% of reported incidents were due to factors beyond the provider's control such as weather and vandalism.

How Much Does Downtime Cost?



Not only is downtime frustrating, it's costly

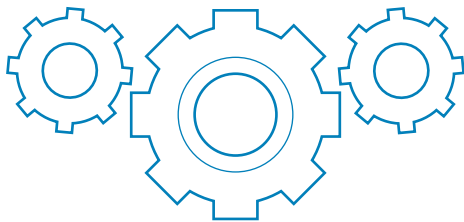
A study by Emerson Network Power found that unplanned downtime can cost companies up to \$5,000/minute!²

Your Regular Connection is NOT Immune

98.6%

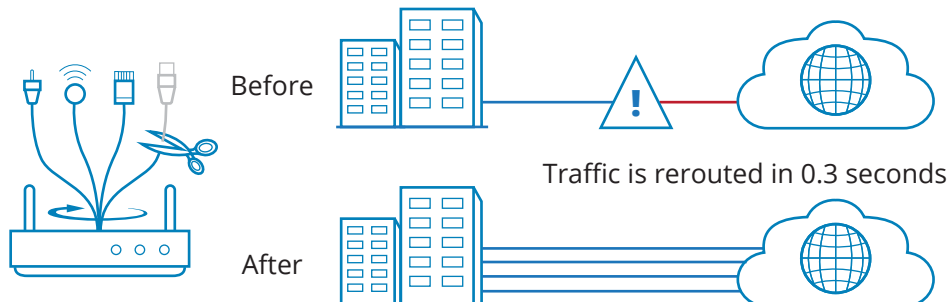
Multapplied also tracked the average business broadband connection to find it only has 98.6% uptime.³ This translates to the average business losing over 10 hours of connectivity each month. For large enterprises, that could mean over \$18 million worth of loss each year.

There IS a Solution:



iTel Bonded Internet eliminates the impact of network downtime altogether. Bonded Internet combines multiple connections into one single resilient and easily managed virtual connection.

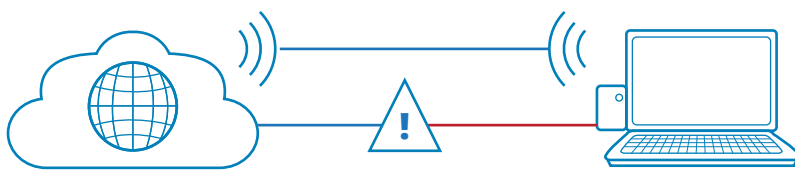
The More the Merrier



Bond up to 5 connections for multi-provider failover.

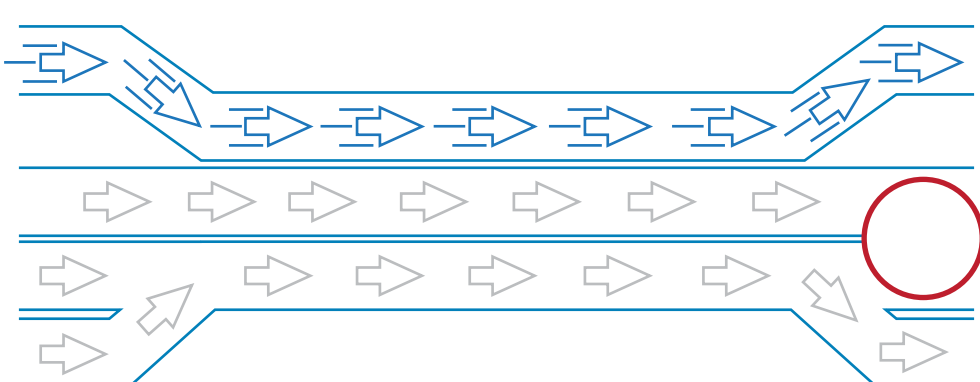
If one connection should happen to go down, the others will seamlessly pick up the slack without a blip in service. When a connection is restored, it is added back to the bond within 0.1 seconds.

Dedicated LTE Failover



Bonded Internet lets you set your wireless backup link as failover. The system will transfer traffic over if your primary connection fails.

Guaranteed Quality of Service (QoS)



Bonding ensures data packets are delivered to the core. We prioritize traffic across the network so important data such as voice and video are complication-free.

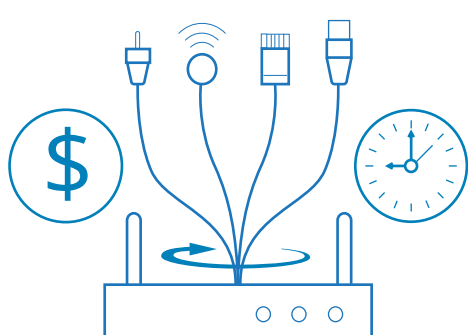
More Bandwidth



The more connections you bond, the more your bandwidth will increase.

Redundancy aside, bonding can do pretty wondrous things for your internet speed. Unlike load balancing solutions, Bonded Internet makes available the total combined bandwidth of all connections for maximum speeds.

In a Nutshell



Bonded Internet increases network reliability, speed, and quality. Downtime is expensive. Slow connections decrease productivity, which is also costly. Even bonding 1 extra connection for failover will pay for itself, because as the studies have proven above, your network is not immune.

Contact iTel Networks and receive a custom network overview. We'll show you how Bonded Internet will save the day for your organization.

1. Multapplied Networks: Reliability: the GOOD, the BAD, the UGLY (March 2016)
2. Emerson Network Power: Unplanned Data Centre Outages (January 2016)

3. Multapplied Networks: Reliability: the GOOD, the BAD, the UGLY (March 2016)
4. iTel Networks (2016)